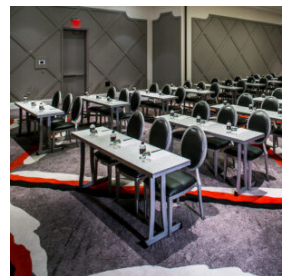


MITYLITE[®]

Royale Banquet Chair

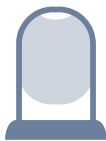


SPECIFICATIONS

Height: 37.5" (95.3 cm) - 51" (129.5 cm)	Width: 18.3" (46.4 cm) - 18.3" (46.5 cm)
Length: 23" (58.4 cm)	Weight: 15 lbs (6.8 kg) - 18 lbs (8.2 kg)
Product Type: Chair	Minimum Order Quantity: 25
Warranty: 12 years	Country of Origin: China
Patents: FormFlex seat	Testing Certifications: Cal Bulletin 117 Compliant, ANSI / BIFMA X5.1 - 2011
Weight Capacity: 1,000 lbs (453.6 kg)	Glide Options: Clear Plastic
Seat Length: 19.8" (50.2 cm)	Seat Width: 18" (45.7 cm)
Seat Height: 18" (45.7 cm) - 31.5" (80 cm)	Seat Foam Type: Molded
Seat Foam Thickness: 2" (5.1 cm)	Frame Material: Aluminum
Frame Tube Size: Tapered	Back Pitch: 98 degrees (dining pitch)
Stacking Type: Nesting	Stacking Number of Chair: 6 chairs
Stack Density: 4.3" (10.8 cm)	Stack Height: 58.8" (149.2 cm)
Stack Depth: 34" (86.4 cm)	

OPTIONS

CHAIR BACK STYLES



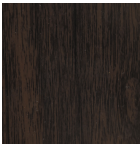
Oval

CHAIR FINISHES

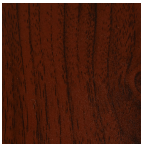
Faux Wood



Charcoal



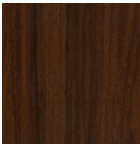
Chocolate



Mahogany



Natural



Walnut

Grade 1



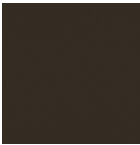
Black Sand



Dark Gold
Sand



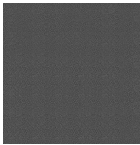
Gold Vein



Java



Silver Sand

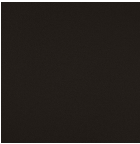


Silver Vein

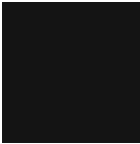


Urban
Bronze
Sand

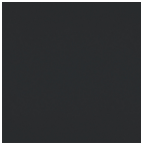
Grade 2



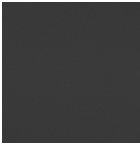
Cocoa



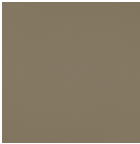
Gloss Black



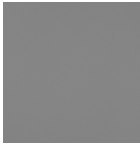
Gunmetal



Pewter
Sand



Satin Nickel



Silver AR



Tungsten
Sand

Grade 3

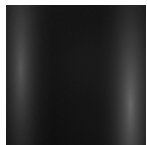


Champagne

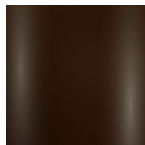


Vintage
Gold

Wet Paint



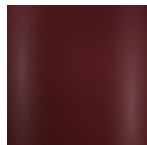
Black



Espresso



Gold



Mahogany



Oiled
Bronze



Silver



Champagne

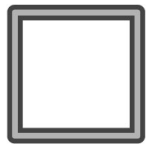
CHAIR HEIGHT

Bar Height, Standard

FABRIC OPTIONS

- Visit our [Fabric Center](#) to see over 2,000+ fabrics!

FRAME PROFILE



Smooth

STACKING & STORAGE

Stacking Type: Stacking
Stacking: 6 chairs
Stack Density: 4.25" (10.7 cm)
Stack Height: 58.75" (149.2 cm)
Stack Depth (Creep): 34" (86.3 cm)

RECOMMENDED CARTS



XpressPort
XpressLink Cart



Comfort Seating RS
Cart