

MITYLITE[®]

Regal Banquet Chair



SPECIFICATIONS

Height: 38.2" (97 cm)

Length: 23.3" (59.1 cm)

Product Type: Chair

Warranty: 12" (30.5 cm) - 12 years

Testing Certifications: ANSI / BIFMA X5.1 - 2011

Glide Options: Black Plastic

Seat Width: 17" (43.2 cm)

Seat Foam Type: Cut

Frame Material: Aluminum

Back Pitch: 98 degrees (dining pitch)

Stacking Number of Chair: 6 chairs

Stack Height: 66.2" (168.1 cm)

Stacking Buttons: Yes

Width: 18.5" (47 cm)

Weight: 16 lbs (7.2 kg)

Minimum Order Quantity: 25

Country of Origin: China

Weight Capacity: 1,000 lbs (453.6 kg)

Seat Length: 18" (45.7 cm)

Seat Height: 18.5" (47 cm)

Seat Foam Thickness: 0.5" (1.3 cm) - 1.5" (3.8 cm)

Frame Tube Size: 1.2" (3 cm)

Stacking Type: Nesting

Stack Density: 4" (10.2 cm)

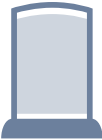
Stack Depth: 34" (86.4 cm)

CUSTOM FABRIC REQUIREMENTS

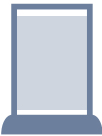
Seat Style	Seat Total	Inside Back	Outside Back	Back Total	Total Yards
Waterfall (Fabric)	0.4 yards	0.18 yards	0.18 yards	0.36 yards	0.76 yards
Waterfall (Vinyl)	0.4 yards	0.18 yards	0.18 yards	0.36 yards	0.76 yards

OPTIONS

CHAIR BACK STYLES



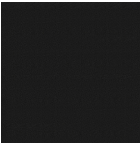
Arch Open



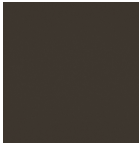
Square Open

CHAIR FINISHES

Grade 1



Black Sand



Dark Gold Sand



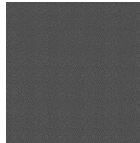
Gold Vein



Java



Silver Sand

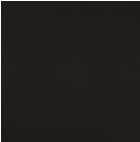


Silver Vein

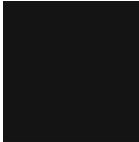


Urban Bronze Sand

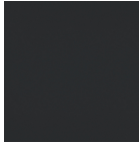
Grade 2



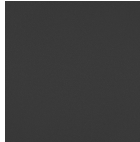
Cocoa



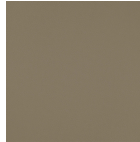
Gloss Black



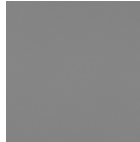
Gunmetal



Pewter Sand



Satin Nickel



Silver AR



Tungsten Sand

Grade 3



Champagne

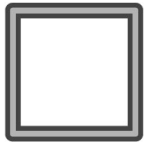


Vintage
Gold

FABRIC OPTIONS

- Visit our [Fabric Center](#) to see over 2,000+ fabrics!

FRAME PROFILE



Smooth

STACKING & STORAGE

Stacking Type: Nesting

Stacking: 6 chairs

Stack Density: 4" (10.16 cm)

Stack Height: 66.2" (168.148 cm)

Stack Depth (Creep): 34" (86.36 cm)

Stacking Buttons: Yes

RECOMMENDED CARTS



XpressPort
XpressLink Cart



Comfort Seating Pan
Cart



Comfort Seating PS
Cart