

MITYLITE®

ABS Serpentine Table



SPECIFICATIONS

Height: 29" (73.7 cm) - 30" (76.2 cm)

Length: 85" (215.9 cm) - 100" (254 cm)

Product Type: Table

Warranty: 15 years

Weight Capacity: 1,600 lbs (725.7 kg)

Table Shape: Serpentine

Distance Between Legs: 48.6" (123.4 cm)

Top Material: ABS Plastic

Apron Material: ABS Plastic

Width: 30" (76.2 cm) - 36" (91.4 cm)

Weight: 43 lbs (19.5 kg) - 66 lbs (29.9 kg)

Minimum Order Quantity: 1

Testing Certifications: ANSI/BIFMA-x5.5

Glide Options: Plastic, Swivel

Tabletop Thickness: 0.8" (1.9 cm)

Distance From Edge To Legs: 17.7" (45 cm)

Trim Material: Plastic

Folded Thickness: 4" (10.2 cm) - 4.5" (11.4 cm)

OPTIONS

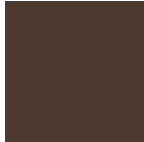
TABLE HEIGHTS

29", 30"

TABLE FRAME FINISHES



Black Sand



Brown Sand



Gray Sand

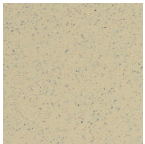
TABLE SIZES

Other Sizes

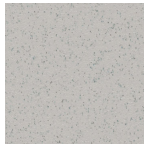
30" x 60", 36" x 72"

TABLETOP COLORS

Smooth



Speckled
Beige



Speckled
Gray

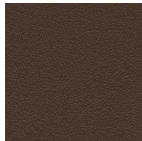
Textured



Beige



Black



Brown



Gray

RECOMMENDED CARTS



ABS Serpentine Table