

MITYLITE[®]

ABS Round Table



SPECIFICATIONS

Height: 29" (73.7 cm) - 30" (76.2 cm)

Weight: 41 lbs (18.6 kg) - 81 lbs (36.7 kg)

Minimum Order Quantity: 1

Testing Certifications: ANSI/BIFMA-x5.5

Glide Options: Plastic

Tabletop Thickness: 0.8" (1.9 cm)

Top Material: ABS Plastic

Apron Material: ABS Plastic

Distance From Edge To Legs: 6.7" (17 cm) -
13.5" (34.3 cm)

Length: 42" (106.7 cm) - 72" (182.9 cm)

Product Type: Table

Warranty: 15 years

Weight Capacity: 2,000 lbs (907.2 kg)

Table Shape: Round

Number Of People Per Table: 4-5 - 8-10

Trim Material: Plastic - Plastic/Xtreme

Distance Between Legs: 28.8" (73 cm) - 45.3"
(114.9 cm)

Folded Thickness: 3.4" (8.6 cm) - 3.6" (9.1 cm)

OPTIONS

TABLE HEIGHTS

29", 30"

TABLE FRAME FINISHES



Black Sand



Brown Sand



Gray Sand

TABLE LEG STYLES



Expediter



Post



Short
Adjustable



Wishbone

TABLE SIZES

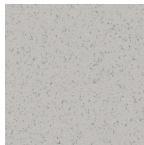
42" Round, 48" Round, 60" Round, 66" Round, 72" Round

TABLETOP COLORS

Smooth



Speckled
Beige



Speckled
Gray

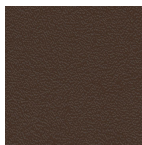
Textured



Beige



Black



Brown



Gray

ADD-ONS



Xtreme Edge
Impact-resistant aluminum edge
protects from dings

RECOMMENDED CARTS



CT Cart - Edge



CT Cart - Stacking



CT Cart - X Leg



XpressPort Round
Table Cart