

# MITYLITE<sup>®</sup>

## ABS Round Folding Table



## SPECIFICATIONS

|  |   |
|--|---|
| Height: 29" (73.7 cm) - 30" (76.2 cm)                      | Length: 42" (106.7 cm) - 72" (182.9 cm)                 |
| Weight: 41 lbs (18.6 kg) - 81 lbs (36.7 kg)                | Product Type: Table                                     |
| Minimum Order Quantity: 1                                  | Warranty: 15 years                                      |
| Testing Certifications: ANSI/BIFMA-x5.5                    | Weight Capacity: 2,000 lbs (907.2 kg)                   |
| Glide Options: Plastic                                     | Table Shape: Round                                      |
| Tabletop Thickness: 0.8" (1.9 cm)                          | Number Of People Per Table: 4-5 - 8-10                  |
| Top Material: ABS Plastic                                  | Trim Material: Plastic - Plastic/Xtreme                 |
| Apron Material: ABS Plastic                                | Distance Between Legs: 28.8" (73 cm) - 45.3" (114.9 cm) |
| Distance From Edge To Legs: 6.7" (17 cm) - 13.5" (34.3 cm) | Folded Thickness: 3.4" (8.6 cm) - 3.6" (9.1 cm)         |

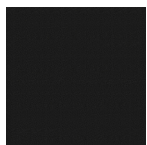
## OPTIONS

### TABLE HEIGHTS

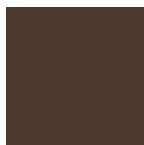
29", 30"

### TABLE FRAME FINISHES

#### Standard



Black Sand



Brown Sand

#### Upgrade



Gray Sand

### TABLE LEG STYLES

#### Standard



Wishbone

#### Upgrade



Expediter



Post



Short  
Adjustable

### TABLE SIZES

42" Round, 48" Round, 60" Round, 66" Round, 72" Round

### TABLETOP COLORS

# ABS Round Folding Table

MITYLITE™

## Standard - Textured



Beige



Black

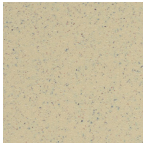


Brown

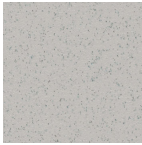


Gray

## Upgrade - Smooth



Speckled  
Beige



Speckled  
Gray

## ADD-ONS



**Xtreme Edge**  
Impact-resistant aluminum edge  
protects from dings

## RECOMMENDED CARTS



CT Cart - Edge



CT Cart - Stacking



CT Cart - X Leg



XpressPort Round  
Table Cart