

MITYLITE[®]

ABS Half Round Table



SPECIFICATIONS

Width: 30" (76.2 cm) - 36" (91.4 cm)

Weight: 32 lbs (14.5 kg) - 40 lbs (18.1 kg)

Minimum Order Quantity: 1

Testing Certifications: ANSI/BIFMA-x5.5

Weight Capacity: 2,000 lbs (907.2 kg)

Tabletop Thickness: 0.8" (1.9 cm)

Distance From Edge To Legs: 11.7" (29.7 cm) -
16.4" (41.7 cm)

Top Material: ABS Plastic

Apron Material: ABS Plastic

Length: 60" (152.4 cm) - 72" (182.9 cm)

Product Type: Table

Warranty: 15 years

Glide Options: Plastic, Swivel

Table Shape: Half Round

Distance Between Legs: 36" (91.4 cm) - 41.9"
(106.4 cm)

Number Of People Per Table: 2 - 3

Trim Material: Plastic

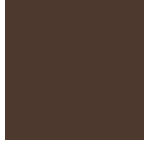
Folded Thickness: 3.5" (8.9 cm)

OPTIONS

TABLE FRAME FINISHES



Black Sand



Brown Sand



Gray Sand

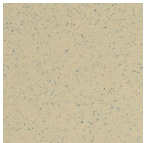
TABLE SIZES

Other Sizes

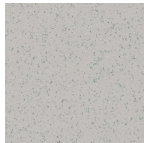
30" x 60", 36" x 72"

TABLETOP COLORS

Smooth



Speckled
Beige



Speckled
Gray

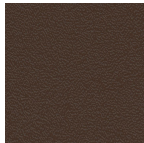
Textured



Beige



Black



Brown



Gray

RECOMMENDED CARTS



RT Cart – Edge



RT Cart - Flat