

# MITYLITE<sup>®</sup>

## ABS Folding Card Table



## SPECIFICATIONS

---

Height: 29" (73.7 cm) - 42" (106.7 cm)

---

Length: 30" (76.2 cm) - 36" (91.4 cm)

---

Product Type: Table

---

Warranty: 15 years

---

Weight Capacity: 2,000 lbs (907.2 kg)

---

Table Shape: Square

---

Distance From Edge To Legs: 3.8" (9.7 cm) -  
6.8" (17.3 cm)

---

Top Material: ABS Plastic

---

Apron Material: ABS Plastic

---

Distance Between Legs: 22.4" (56.9 cm)

---

---

Width: 30" (76.2 cm) - 36" (91.4 cm)

---

Weight: 26 lbs (11.8 kg) - 31 lbs (14.1 kg)

---

Minimum Order Quantity: 1

---

Testing Certifications: ANSI/BIFMA-x5.5

---

Glide Options: Plastic

---

Tabletop Thickness: 0.8" (1.9 cm)

---

Number Of People Per Table: 4

---

Trim Material: Plastic/Xtreme

---

Folded Thickness: 3" (7.6 cm)

---

## OPTIONS

### TABLE HEIGHTS

29", 30", 42"

### TABLE FRAME FINISHES



Black Sand



Brown Sand



Gray Sand

### TABLE LEG STYLES



Expediter



Post

### TABLE SIZES

Other Sizes

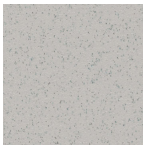
30" x 30", 36" x 36"

### TABLETOP COLORS

Smooth



Speckled  
Beige



Speckled  
Gray

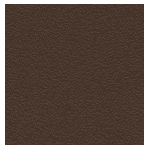
Textured



Beige



Black



Brown



Gray

## RECOMMENDED CARTS



XpressPort Cocktail  
Cart