

MITYLITE[®]

ABS Expediter Table



SPECIFICATIONS

Height: 29" (73.7 cm) - 42" (106.7 cm)

Weight: 24 lbs (10.9 kg) - 45 lbs (20.4 kg)

Product Type: Table

Warranty: 15 years

Glide Options: Plastic - Plastic, Swivel

Table Shape: Round - Square

Distance Between Legs: 22.4" (56.9 cm)

Number Of People Per Table: 3 - 4-5

Trim Material: Plastic - Plastic/Xtreme

Folded Thickness: 3" (7.6 cm) - 3.2" (8.1 cm)

Length: 30" (76.2 cm) - 42" (106.7 cm)

Width: 30" (76.2 cm) - 36" (91.4 cm)

Minimum Order Quantity: 1

Testing Certifications: ANSI/BIFMA-x5.5

Weight Capacity: 2,000 lbs (907.2 kg)

Tabletop Thickness: 0.8" (1.9 cm)

Distance From Edge To Legs: 3.8" (9.7 cm) -
6.8" (17.3 cm)

Top Material: ABS Plastic

Apron Material: ABS Plastic

OPTIONS

TABLE HEIGHTS

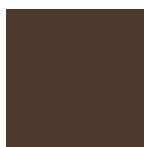
29", 30", 42"

TABLE FRAME FINISHES

Standard

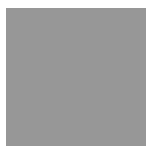


Black Sand



Brown Sand

Upgrade



Gray Sand

TABLE SIZES

30" Round, 36" Round, 42" Round

Other Sizes

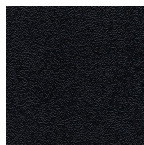
30" x 30", 36" x 36"

TABLETOP COLORS

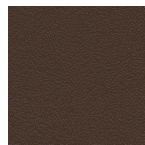
Standard - Textured



Beige



Black



Brown



Gray

Upgrade - Smooth



Speckled
Beige



Speckled
Gray

ADD-ONS

Skirting Clips

Attaches skirting to ABS Tables, linens not included, ask your sales reps for details.

RECOMMENDED CARTS



CT Cart - X Leg